

# Moorings 4800 Crewed

## Specifications and Equipment List - Moorings Upgrades In Bold

### SALOON/INTERIOR

---

- Laminate finish with solid wood trims
- Wear resistant simulated wood flooring
- **Saloon table converts to a double berth**
- U-shaped settee
- LED overhead lighting
- Ventilation through forward facing portlights and watertight door
- Stowage space under settee cushions
- 2 x Escape hatches under stairways to hulls
- Front doorway access to forward cockpit

### GALLEY

---

- Corian® galley worktop surfaces
- Single lever mixer faucet
- Double bowl stainless steel sink
- Dish and cutlery drying recess with drainage and cover
- Vitrefrigo 2-drawer fridge/freezer 56USgal / 212L 12v
- 3-burner gas hob & oven
- Gas solenoid shut-off valve with control at switch panel & warning light at cooker
- Separate garbage bin locker with side & top access
- Stowage space in shelf lockers
- Corian® galley shelf with spice rack

### NAVIGATION CONSOLE

---

- Chart table with overhead LED light
- Instrument and switch panel
- Chart table bench seat with stowage under cushion

### CABINS x 4

---

- Laminate finish with solid wood trims
- Double berths: Forward bunks (56in / 1.42m x 80in / 2.05m)
- Double berths: Aft bunks (59in / 1.50m x 80in / 2.05m)
- Hanging locker with lower shelf
- Bedside storage cubby
- LED overhead lighting and reading lamps
- Overhead roller blinds for privacy in combination with roller bug screens
- Large open shelves
- Stowage drawers under bunk
- Large hull window incorporating portlight and pleated blind
- Double USB sockets
- **Port forepeak has single berth, light & fan with access from deck and port forward cabin**
- **Starboard forepeak has berth, head, shower, basin, light & fan (access from deck hatch only)**

### HEAD COMPARTMENTS x 4

---

- Sliding head door with coat hook
- Washbasin with basin mixer and Corian® worktop
- Vanity locker with mirror
- Towel hook, rail and ring
- Separate shower compartment with door, lever mixer and adjustable shower rose
- Shower sump with push-button drainage
- LED overhead lighting
- Overhead roller blinds for privacy in combination with roller bug screens
- **Electric flushing toilet**

### DECK & HULL

---

- *Flexiteek* simulated teak decking on forward and aft cockpit
- Guardwires with stanchions, bases, port & starboard side gates
- Guardwires across bow and stern
- 1500w vertical windlass 10mm chain gypsy with handheld remote

- Gas cylinder regulator in dedicated cockpit LPG locker
- Anchor bow roller fitting
- Anchor chain stopper
- Liferaft locker with convertible fore/aft seat bolster in aft cockpit
- Sliding companionway door (2 leaf)
- Hardtop over cockpit complete with LED lighting
- Hardtop bimini over helm with supports and LED lighting
- Folding swim ladder with five teak steps
- Cockpit fridge
- Cockpit table
- Trampoline
- Helmseat with upholstered backrest
- Horseshoe buoy with holder
- Acrylic smoke grey tinted windows
- Hardtop supports
- Side window brows
- 4 x Size 10 flush hatches over heads
- 4 x Size 44 flush hatches over cabins
- 2 x Size 60 flush hatches on foredeck (vented)
- 1 x Size 70 flush hatch over cockpit
- 2 x Size 5 portlights in windscreen
- 10 x Size 1 portlights in hull side and transom
- 1 x Anchor chain bin
- 1 x Anchor/windlass locker
- 2 x Foredeck lockers
- Forward lounging cockpit with hardtop with watertight saloon access door and sliding hatch for easy foredeck access
- 1 x Forward cockpit locker
- 2 x Seats with stowage locker under in forward cockpit
- 2 x Pulpits with seats
- 2 x Pushpits
- 2 x Coachroof handrails
- 7 x 330mm mooring cleats
- 2 x Transom grab handrails
- Drink holders (4 x in forward cockpit, 2 x at helmstation, 1 x in aft cockpit)
- Compass at helm position
- **Removable helmseat spray dodger**
- **Custom davit system (stainless steel) with electric winch**
- **Coach roof side window removeable shade covers**
- **Cockpit side and back curtains**
- **Upholstered fixed stainless steel cockpit stools**

## MAST, RIGGING & SAILS

---

- Natural anodized mast and boom, with steps on mast
- Natural anodized crossbeam with mooring cleats
- Mainsail full battened with 2 rows reefs
- 120% Furling genoa
- Bridle mainsheet system (3:1 purchase)
- 2 x Mainsheets (3:1 purchase)
- Genoa furler
- 1 x Furler jammer on side deck
- 3 x Halyards (main, genoa & spare)
- 1 x Winch handle pocket at helm
- 2 x Winch handles
- 1 x Electric halyard / sheet winch
- **1 x Additional electric halyard / sheet winch**
- 1 x Main sheet winch
- 2 x Genoa cars with pin stop
- 2 x Genoa tracks
- 2 x Genoa sheets
- 2 x Main halyard clutch at helm
- 2 x Genoa clutch at helm
- 2 x Mainsheet clutch at helm
- 2 x Reef clutch at helm
- 1 x Clutch and cleat on mast for genoa halyard
- 4 x Padeyes to allow for gennaker tackle
- Wind indicator
- 2 x Additional spare 12v wires in mast

- Additional spare conduit with messenger in mast
- **Boom cover backpack system**
- Rigid Boom Vang
- 2 x Single line reefs lead aft
- Main boom topping lift

## RUDDER & STEERING SYSTEM

---

- Balanced spade rudders
- Rudder stock in F16ph stainless steel
- JP3 Self aligning bearings
- *Edson* chain-and-wire steering system complete with bulkhead steering unit and brake
- Destroyer-type steering wheel
- Stainless steel emergency tiller

## ENGINE & CONTROLS

---

- Double lever throttle / gearshift control
- Sound deadening panels in engine room
- 2 x Engine room ventilation fans and ducting
- **2 x Yanmar 4JH57 57HP engines**
- 2 x SD60 sail drives with 3-blade fixed propellers
- 2 x Fuel deck fillers
- 2 x Fuel filter / water separators
- 2 x Fuel tanks 185USgal / 700L total capacity
- 2 x Exhaust skin fittings (stainless steel)
- 2 x Exhaust water anti-siphon locks
- 2 x Cooling raw water inlet strainers
- 2 x Exhaust cooling water temperature sensors with audible alarms at helm

## ELECTRICAL INSTALLATION

---

- LED Courtesy lights at stairways
- Bi-color & stern navlights
- 12v DC switch panel
- 2 x 12v Outlet socket at the switch panel and helmstation
- 2 x Fuel tank gauges at helm position
- 2 x Ammeters at helm position
- **2 x AGM 210Ah house batteries**
- **2 x AGM 100Ah engine starter batteries**
- **1 x Additional AGM 210Ah house battery**
- 1 x House battery isolator switch
- 2 x Engine starter battery isolator switches
- 2 x Alternators, standard with engines
- 1 x Electrical spares kit: fuses, relays, fuse holders
- 1 x Electric fog horn with control at helm station
- **Raymarine Instrument Package: Includes Ray55 VHF at navstation, p70 color autopilot display, C95 chartplotter with wifi, i60 wind instrument & i50 Tridata speed, log & depth instrument**
- **110v or 220v hard wired shore cable, includes 1 heavy duty 30amp shore power line, AC switch panel, and AC double outlets in cabin, galley and at switch panel**
- **Fusion 700i Series Marine Stereo in saloon with docking station, includes Bluetooth, USB, & Aux connectivity, 2 x Fusion Marine speakers in saloon, 2 x in aft cockpit & 2 x on flybridge, 2 x in fwd cockpit & Wired remote control at helm station**
- **Battery charger 60amp**
- **Ventilation fans in saloon (3) and one in each stateroom**
- **Northern Lights 9 kw Genset + battery and fittings**
- **3 x Cruisair Air conditioning, Total 40,000 BTU (2 x 12,000, 1 x 16,000)**
- **23" Flat Screen TV/DVD in Saloon Dual 110v / 220v combo**
- **2 x Solar Panels 70w each fitted to hardtop**
- **Forward looking Garmin camera displays panoramic view of boat through MFD at helm**
- **Microwave oven in galley**

## PLUMBING INSTALLATION

---

- Hot and cold pressurized fresh water system
- 1 x 3.5 GPM fresh water pressure pump with 1L accumulator tank
- 2 x Water tanks with total capacity 206USgal / 780L
- 2 x Hot water tanks with total capacity 12USgal / 46L
- 4 x Shower sump with electric push button drainage
- 2 x Holding tanks, total capacity 45USgal / 170L

- 2 x Electric bilge pumps (keel sump) with float switches and alarm at switch panel
- 2 x Manual bilge pumps (keel sump)
- 2 x High water bilge float switches with alarm at switch panel
- 2 x Electric bilge pumps (engine room) with alert at switch panel
- **Transom shower with hot and cold water mixer**

## GENERAL EQUIPMENT

---

- 6 x Fire extinguishers
- Owner's Operating Manual
- CE Certification
- NMMA Certification

## DELIVERY & COMMISSIONING

---

- **Transport to Cape Town Harbor, launching and stepping of mast, installation of sails and rigging, commissioning of equipment and sea trials**
- **Antifouling Paint**
- **Delivery from Cape Town to charter port**

## SAFETY GEAR

---

- **55lb (25kg) Delta anchor with 230ft (70m) of chain**
- **35lb (15kg) Britany anchor with 26ft (8m) of chain and 200ft (61m) warp**
- **Anchor bridle, shackles and hook**
- **6 x Fenders**
- **4 x Mooring lines 18mm (70in) x 10m (32ft 10in)**
- **2 x Spring lines 18mm (70in) x 15m (49ft 2in)**
- **12 x Life jackets**
- **Safety harnesses**
- **Bell**
- **Flare Kit**
- **Binoculars**
- **Navigation tools: Parallel rule, compass, dividers**

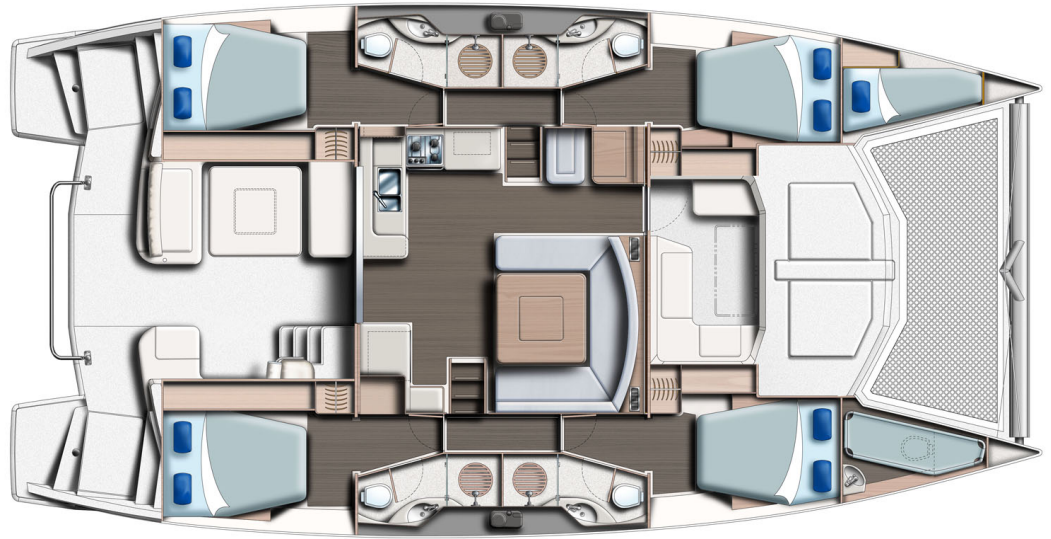
## CRUISING GEAR

---

- **Bed linens for twelve (12)**
- **Upgraded glasses, dinnerware for twelve (12)**
- **Flatware for twelve (12)**
- **Pots, pans, miscellaneous food prep tools**
- **Cooking and serving utensils**
- **Upgraded appliances: Blender, coffee maker, food processor, miscellaneous food prep**
- **Snorkeling gear for twelve (12)**
- **Towels and washcloths for twelve (12)**
- **Beach towels, towels, washcloths for twelve (12)**
- **12ft rigid bottom inflatable with 25HP outboard**
- **Waterskis, kneeboard, tube & life vests**
- **1 x Two person kayak**
- **1 x SUP (stand up paddleboard) and paddle**
- **Fishing tackle**

## GENERAL SPECIFICATIONS

Length Overall: 14.75m/48ft 5in  
Waterline Length: 13.85m/45ft 5in  
Mast Height: 22.60m/74ft 2in  
Beam: 7.64m/25ft 0in  
Draft: 1.47m/4ft 10in  
Displacement: 17000kg/37480lb  
Fuel Capacity: 700L/185gal  
Water Capacity: 780L/206gal  
Sail Area: 144sqm/1555sqft  
Engines: 2 x 57HP



*The Builder reserves the right to change or amend the contents of this document at any time without prior notification to any third party, and no liability will be accepted for errors contained within the same.*