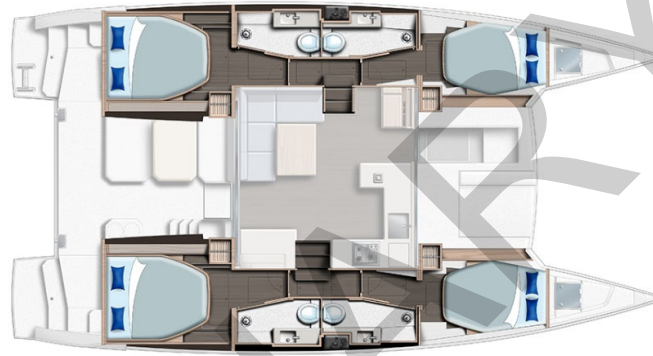


Moorings 4200 - 4 Cabin Version

Specifications and Equipment List

Moorings Charter Upgrades in BOLD

| | |
|----------------------------|-----------------------|
| Length Overall: | 41ft 7in 12.67m |
| Waterline Length: | 40ft 10in 12.44m |
| Mast Height: | 67ft 10in 20.68m |
| Beam: | 23ft 1in 7.04m |
| Draft: | 4ft 7in 1.4m |
| Displacement: | 27485 lbs 12467 kg |
| Fuel Capacity: | 158 USgal 600ltr |
| Water Capacity: | 174 USgal 660 ltr |
| Sail Area: | 1217 sqft 113.1 sqm |
| Diesel Engines Sail drive: | 2 x Yanmar 45hp |



DECK & HULL

- Guardwires with stanchions, bases, port & starboard side gates
- Guardwires across bow and stern
- 1000w vertical windlass 10mm gypsy with hand-held remote
- Anchor bow roller fitting
- Anchor chain stopper
- Liferaft locker with convertible fore/aft seat bolster
- Sliding companionway door/window
- Hardtop over cockpit complete with LED lighting
- Hardtop bimini over helm with supports and LED light
- Folding swimming ladder with teak steps
- Cockpit table
- **Refrigerator in aft cockpit**
- **Aft cockpit cushions (seats & backrest)**
- **Aft cockpit side and back shade curtains**
- 1 x Furler jammer on side deck
- Bridle mainsheet system (3:1 purchase)
- Trampoline
- Helmseat with upholstered backrest
- **Helmseat cushion**
- **Removable helmstation spray dodger**
- Acrylic smoke grey tinted windows
- Hardtop supports
- Side window brows
- Hatches:
 - 2 x Size 10 flush hatches
 - 6 x Size 44 flush hatches
- Portlights:
 - 2 x Size 5 in windscreen
 - 10 x Size 1 in hull side and transom
- 1 x Anchor chain bin
- 1 x Anchor/windlass locker
- 3 x Foredeck locker

INITIALS: _____

INITIALS: _____

- Forward access to foredeck with watertight saloon access door
- 2 x Pulpits with seat
- 2 x Pushpits
- 2 x Coachroof handrails
- 2 x Hardtop grab handles
- 2 x Transom grab handles
- 9 x 260mm mooring cleats
- 2 x Winch handles
- **2 x Electric primary winches**
- 1 x Main sheet winch (black anodised alloy)
- 2 x Genoa cars with pin stop
- 2 x Genoa tracks
- 1 x Winch handle pocket at helm
- 2 x Halyard clutch at helm (main & gennaker)
- 2 x Genoa clutch at helm
- 2 x Mainsheet clutch at helm
- 2 x Reef clutch at helm
- 1 x Clutch and cleat on mast for genoa halyard
- 4 x Padeyes to allow for gennaker tackle
- Drinks holders: 2 in forward stairwell & 4 in aft cockpit/helm
- Rope locker at helm
- **LPG gas outlet on stern rail for BBQ**
- **Custom stainless steel davit system with tackle and electric winch**

MAST, RIGGING & SAILS

- **Custom heavy duty battened charter mainsail**
- **Upgraded heavy duty furling genoa with UV protection**
- **Stackpack system in Moorings blue with logo**
- Natural anodised mast
- Natural anodised crossbeam with mooring cleats
- Wind indicator
- Genoa furler
- Mainsail full battened with 2 rows reefs
- Furling genoa
- 2 x Additional spare 12v wires in mast
- Additional spare conduit with messenger in mast

FLYBRIDGE LOUNGE

- **Coachroof lounge with port access steps, L-shaped settee with lounge cushions (seats and backrest) and table**
- **4 x External coachroof lounge speakers with wired remote and amplifier**

SALOON / INTERIOR

- Laminate finish with solid wood trims
- Wear resistant simulated wood flooring
- Saloon table - convertible to double bunk with mattress
- **Silvertex "Macadamia" upholstery pack**
- LED overhead lighting
- Concealed overhead rope lighting
- Overhead window with blind
- Ventilation through forward facing portlights
- Stowage space under settee cushions
- Forward doorway access to foredeck
- Access to aft cockpit through sliding door/window
- 2 x Loose ottoman stools to be used as chart table seat, settee seating, or owner cabin vanity table seat

INITIALS: _____

INITIALS: _____

GALLEY

- Solid surface acrylic worktops
- Single lever mixer faucet with pull-out sprayer
- Single bowl stainless steel sink
- Dish and cutlery drying recess with drainage
- Cover for drying recess
- Vitrifrigo 2-drawer fridge/freezer 56USgal / 212Ltr 12v
- ENO 3-burner gas hob
- ENO gas oven
- Gas solenoid shut-off valve with control at switch panel & warning light at cooker
- Gas cylinder regulator in dedicated cockpit LPG locker
- Separate garbage bin locker
- Stowage space in shelf lockers
- Stowage space under floorboards
- Pot drawer under oven
- 3 x Drawers alongside oven
- Outboard galley shelf
- **Microwave oven**

NAVIGATION CONSOLE

- Chart table with storage locker under hinged lid
- LED overhead lighting
- Backrest stainless steel railing

OWNER CABIN

- Laminate finish with solid wood trims
- Wear resistant laminate flooring
- Double berth (1.57m x 2.04m or 5'2" x 6'8")
- 1 x Full height hanging locker
- 1 x Full height shelf locker
- Vanity table/desk with storage locker under lid
- Fold up vanity mirror
- Drawer unit with 3 x drawers
- 2 x Stowage drawers under bunk
- Sliding entrance door with lock
- LED overhead lighting
- Concealed overhead rope lighting
- Concealed under bunk rope lighting
- 2 x LED reading lamps over bunk

OWNER CABIN HEAD

- Large washbasin with basin mixer and solid surface acrylic top
- Under-basin locker with toilet roll holder
- Separate shower compartment with divider with lever mixer and adjustable drainage system
- Shower sump with automatic drainage system
- **Large bowl electric toilet**
- Double towel rail, hook and ring
- Vanity locker with mirror
- Dedicated trash can locker
- Large linen locker
- Sliding heads door
- Overhead roller blind for privacy
- LED overhead lighting

INITIALS: _____

INITIALS: _____

GUEST CABINS x 2

- Laminate finish with solid wood trims
- Wear resistant laminate flooring
- Double berths:
- Forward Bunk (1.5m x 2.14m or 4'11" x 7'0")
- Aft Bunk (1.57m x 2.04m or 5'2" x 6'8")
- Hanging locker with lower shelf
- LED overhead lighting
- 2 x LED reading lamps in each cabin
- Concealed overhead rope lighting
- Concealed under bunk rope lighting
- Overhead roller blinds for privacy
- Large open shelves
- 2 x Stowage drawers under each bunk
- Large hull window incorporating portlight and pleated blind
- Transom portlight in aft cabins

GUEST HEAD COMPARTMENTS x 2

- Washbasins with basin mixer and solid surface acrylic top
- Under-basin locker with toilet roll holder
- Vanity locker with mirror
- Double towel rail and ring
- Sliding heads door
- Coat hook on door
- Dedicated trash can locker
- Shower compartment with lever mixer and adjustable shower rose
- Shower sump with automatic drainage system
- LED Overhead lighting
- Overhead roller blinds for privacy
- **Large bowl electric toilet**

ELECTRICAL INSTALLATION

- **220V hard wired shore power pack: includes 2 heavy duty 50ft 30amp shore power lines, AC switch panel, AC outlets in cabins, saloon, galley, and nav station**
- Digital monitoring with 7" MFD
- LED courtesy lights at stairways
- Bi-color & stern navlights
- 12v DC switch panel
- 12v socket at switch panel and at helm station
- 2 x Double USB socket at saloon cave locker
- 2 x Double USB socket at chart table
- 1 x Double USB socket in each cabin
- 1 x Magnetic mobile phone charger at nav desk
- **4 x House batteries (2 standard + 2 additional)**
- 2 x Engine starter batteries - 100Ah lead acid type
- **Upgrade standard lead acid house & engine batteries to AGM batteries**
- **12v inverter/battery charger**
- 1 x House battery isolator switch
- 2 x Engine starter battery isolator switches
- 2 x Alternators, standard with engines
- **Sterling alternator to battery charger. Includes button at helm to link engine batteries to house batteries**
- 1 x Electrical spares kit: fuses, relays, fuse holders
- **Raymarine Base Pack:**
 - Ray VHF (Multizone with AIS receiver) at nav desk & additional VHF handset at helm**
 - p70 color autopilot display**

INITIALS: _____

INITIALS: _____

AXIOM9 Multifunction display
i70 color instrument at helmstation

Depth & wind transducer

- **1 x Forward-facing Raymarine camera with augmented reality function including AR200 GPS**
- **Fusion Marine Stereo with docking station in saloon. Includes Bluetooth, USB, & AUX connectivity**
- **Fusion Marine speakers in saloon (2) & aft cockpit (2). Wired remote control at helm station.**
- **2 x External foredeck speakers with wired remote and amplifier**
- **4 x External coachroof lounge speakers with wired remote and amplifier**
- **Mounted TV in saloon**
- **Ventilation fans in cabins**
- **Genset - Northern Lights 6kW**
- **Air conditioning (2) Total 32,000 BTU**
- **2 x 100w solar panels fitted to hard top**
- **2 x Blue underwater lights mounted in stern**

ENGINE & CONTROLS

- Double lever throttle / gearshift control
- Sound deadening panels in engine room
- 2 x Engine room ventilation fans and ducting
- 2 x Yanmar 45hp diesel engines with sail drives
- 2 x Propellers - fixed blade
- 2 x Fuel deck fillers
- 2 x Fuel filter / water separators
- 2 x Fuel tanks 160USgal / 600Ltr total capacity
- 2 x Exhaust skin fittings (stainless steel)
- 2 x Exhaust water locks
- 2 x Cooling water inlet strainers
- 2 x Exhaust cooling water temperature sensors with audible alarms at helm
- **Engine room automated fire suppression system**

RUDDER & STEERING SYSTEM

- Balanced spade rudders
- Rudder stock in 17-4 PH stainless steel
- Self aligning bearings
- Chain-and-wire steering system with bulkhead steering unit and brake
- Destroyer-type steering wheel
- Emergency tiller (stainless steel)

RUNNING RIGGING

- 2 x Main sheets (3:1 purchase)
- 2 x Genoa sheets
- 3 x Halyards (main, genoa & spare)
- 2 x Single line reefs lead aft
- Main boom topping lift

PLUMBING INSTALLATION

- Hot and cold pressurized fresh water system
- 2 x Water tanks, 174USgal / 660ltr total capacity
- 1 x Fresh water pressure pump with accumulator tank
- 2 x Hot water cylinders 12USgal / 46ltr total capacity
- **Hot and cold transom shower**
- 4 x Automatic shower drain pumps
- 2 x Holding tanks, 32USgal / 120ltr total capacity
- 2 x Electric bilge pumps (keel sump) with float switches and alarm at switch panel
- 2 x Manual bilge pumps (keel sump)

INITIALS: _____

INITIALS: _____

- 2 x High bilge float switches with alarm at switch panel
- 2 x Electric bilge pumps (engine room) with float switch and warning light at switch panel
- Freshwater connection
- **Electric flushing toilets**
- **Watermaker: 31USgal / 117ltr per hr**

SAFETY GEAR

- **Mooring / dock lines**
- **6 x Fenders**
- **55lb Stainless steel anchor with galvanised chain**
- **35lb Britany anchor with chain & warp**
- **Anchor bridle, shackles and hook**
- **Life jackets and safety harnesses per max pax**
- **Life raft**
- **Flare kit**
- **Binoculars**
- **Navigation tools: Parallel rule, compass, dividers**
- **Safe with digital combination lock**

GENERAL EQUIPMENT

- Owner's Operating Manual
- 6 x Fire extinguishers
- Fire suppression system
- NMMA Certification
- CE Certification
- **Commissioning and delivery to charter base**

CRUISING GEAR

- **Bed linens per max pax**
- **Plates, cups, saucers, glasses per max pax**
- **Flatware per max pax**
- **Pots, pans, miscellaneous food prep tools**
- **Cooking and serving utensils**
- **Coffee pot, tea kettle, toaster**
- **Towels and washcloths per max pax**
- **Snorkeling flippers**

NOTE

The Builder reserves the right to change or amend the contents of this document at any time without prior notification to any third party, and no liability will be accepted for errors contained within the same.

INITIALS: _____

INITIALS: _____

REV 1: 28-July-2020