

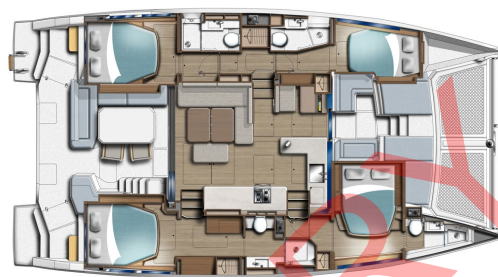


Moorings 4600 | 4-cabin

4 Cabins / 4 Heads

Specifications and Equipment List (Moorings charter upgrades in bold)

Yacht Model:	Leopard 46
Length Overall:	45ft 7in 13.90m
Length waterline:	44ft 13.42m
Beam:	24ft 1in 7.35m
Draft:	5ft 5in 1.65m
Fuel Capacity:	182 US Gal 690 L
Water Capacity:	185 US Gal 700 L
Engines:	2 x Yanmar 45 HP



DECK & HULL

- Guard wires with stanchions, bases, port & stbd side gates
- Guard wires across bow and stern
- 1600w vertical windlass with capstan, 10mm gypsy & hand-held remote
- Anchor bow roller fitting
- Anchor chain stopper
- Life raft locker
- Aft cockpit seat with convertible fore/aft seat bolster
- Sliding companionway door
- Hardtop over fwd and aft cockpit complete with LED down lighting and concealed rope lighting in aft cockpit
- Hardtop bimini over helm with stainless steel supports
- Folding swimming ladder with teak steps
- Cockpit table
- Bridle mainsheet system (3:1 purchase)
- Trampoline
- Helm seat with upholstered base and backrest
- Hardtop supports
- Hatches:
- 3 x Size 10 Flush Hatch over heads
- 5 x Size 44 Flush Hatch over fwd and aft cabins
- 1 x Size 44 Flush Hatch over Port forepeak (hatches over forepeaks include mushroom cowls)
- Portlights:
- 2 x Size 5 in windscreen
- 8 x Size 1 in hull side
- 2 x Size 1 in transom
- 1x Anchor/windlass locker with chain bin
- 3 x Foredeck/forward cockpit lockers
- Forward lounging cockpit c/w watertight saloon access door
- 2 x Pulpits with seat
- 2 x Pushpits
- 2 x Coachroof s/s handrails
- 2 x Hardtop grabhandles
- 2 x Transom grabhandles
- 9 x 310mm mooring cleats
- 2 x Winch handles
- 2 x Primary electric winches
- **1 x Electric Main sheet winch**
- 2 x Genoa cars
- 2 x Genoa tracks

Exhibit A

- 1 x Winch handle pocket at helm
- 1 x Halyard clutch at helm (mainsail)
- 1 x Halyard clutch at helm (gennaker)
- 2 x Genoa sheet clutch at helm
- 2 x Main sheet clutch at helm
- 2 x Reef clutch at helm
- 1 x clutch and cleat on mast for genoa halyard
- 1 x Furler clutch
- Drinks Holders - 4 x in fwd cockpit and 2 x at helm
- **Aft cockpit cushions (seats & backrest)**
- **Forward cockpit cushions (seats)**
- **Removable helm station spray dodger**
- **Custom stainless steel davit system with tackle and electric winch**
- **Stainless steel anchor and galvanized chain**
- **Additional anchor c/w 26ft (8m) chain & 200ft (61m) warp**
- **Anchor bridle, shackles and hook**

MAST, RIGGING & SAILS

- **Custom heavy duty battened charter mainsail**
- **Upgraded heavy duty furling genoa with UV protection**
- **Stackpack system in Moorings blue with logo**
- Natural anodized mast with standing rigging
- Natural anodized crossbeam c/w mooring cleats
- Wind indicator
- Genoa furler
- Additional spare conduit with messenger in mast
- Deck light
- Horn
- Steaming light
- Anchor light

COCKPIT

- Compass at helm position
- 2 x Folding deck chairs
- **Gas Plancha Grill**
- **Refrigerator in aft cockpit**

COACHROOF LOUNGE

- L-Shaped Settee with cushions and backrest
- Table with drinks holders
- Sunbed

SALOON / INTERIOR

- Laminate finishes with solid wood trims
- Wear resistant laminate flooring
- Saloon table folds into coffee table
- L-shaped settee
- LED overhead lighting
- Ventilation through forward facing portlights
- Stowage space under settee cushions
- Forward doorway access to forward cockpit
- Access to aft cockpit through sliding door
- Loose upholstered bench to be used as:
 - Interior saloon seating
 - Aft cockpit seating
- Joinery staircase to hull accommodation
- **Upholstery Pack - Silvertex "Macadamia"**

GALLEY

- Staron galley worktop surfaces

Exhibit A

- Single lever mixer faucet with pull out sprayer
- Single bowl stainless steel sink
- Dish and cutlery drying recess with drainage
- Cover for drying recess
- Vitrifrigo 2-drawer front-opening fridge/freezer
- 56USgal / 212Ltr 12v refrigeration
- 4-burner gas hob
- Convection microwave oven
- Gas solenoid shut-off valve with control at switch panel & warning light at cooker
- Gas cylinder regulator in dedicated cockpit LPG locker
- Separate garbage bin locker
- Stowage space in shelf lockers
- Stowage space under floorboards
- 1 x Pot storage drawer below oven
- 4 x Galley drawers
- Spice/condiment drawer
- Outboard galley shelf
- Smoke detector / alarm
- Carbon monoxide detector / alarm
- **Additional fridge/freezer**

NAVIGATION CONSOLE

- Chart table with storage locker under hinged lid
- LED overhead lighting
- Fixed seat with backrest

OWNER CABIN

- Laminate finishes with solid wood trims
- Wear resistant simulated wood flooring
- Double berth (1.50m x 2.05m or 59" x 80")
- 1 x Full height hanging locker
- 1 x Full height shelf locker
- Vanity table/desk with storage locker under lid
- Fold up vanity mirror
- Drawer unit with 3 x drawers
- Round Ottoman
- 1 x Stowage drawer under bunk
- Sliding entrance door with lock
- LED overhead lighting
- Concealed overhead rope lighting
- 2 x LED reading lamps over bunk
- Large hull window incorporating portlight and honeycomb blind
- Transom portlight in aft cabins
- Carbon monoxide detector/alarm

HEADS (OWNER CABIN)

- Large washbasin with basin mixer and Staron top
- Under basin locker (timber laminate finish)
- Separate shower compartment c/w lever mixer and adjustable shower rose
- Shower sump with automatic drainage system
- Electric toilet with Dual flush (Salt and Fresh)
- Double towel rail and hook
- Vanity locker with mirror
- Dedicated trashcan locker
- Sliding heads door
- Overhead roller blind for privacy
- LED Overhead lighting

GUEST CABINS x 3

- Laminate finishes with solid wood trims

INITIALS _____

INITIALS _____

REV: 08-28-2024

Exhibit A

- Wear resistant simulated wood flooring
- Double berths:
 - Fwd Bunks (1.42m x 2.15m or 56" x 84")
 - Aft Bunk on port side (1.50m x 2.05m or 59" x 80")
- Bedside shelf
- Hanging locker
- LED overhead lighting
- Concealed overhead rope lighting
- 2 x LED reading lights
- Overhead roller blinds for privacy
- Large open shelves
- 2 x Stowage drawers under bunk in forward cabins and 1 x Stowage drawer in aft cabins
- Stowage space under floorboards
- Large hull window incorporating portlight and honeycomb blind
- Transom portlight in aft cabins
- Carbon monoxide detector/alarm

HEADS COMPARTMENTS x 3

- Washbasins with basin mixer and Staron top
- Under-basin locker with toilet roll holder
- Vanity locker with mirror
- Double towel rail and hook
- Sliding heads door (all heads except forward starboard heads)
- Hinged door (forward starboard heads only)
- Coat hook on door
- Dedicated trashcan locker
- Shower compartment c/w lever mixer and adjustable shower rose
- Shower sump with automatic drainage system
- LED Overhead lighting
- Overhead roller blinds for privacy (when applicable)
- Electric toilets with Dual flush (Salt and Fresh)

PORT FOREPEAK

- Stowage space with access from fwd port cabin
- LED touch light

STARBOARD FOREPEAK

- Stowage space with access from starboard head

ELECTRICAL INSTALLATION

- Digital monitoring with Multi-Function Display at helm
- LED Courtesy lights at stairways and aft cockpit
- LED Bi-colour & stern navlights
- 12v DC switch panel
- 1 x Double USB sockets at helm station
- 1 x Double USB outlets at Nav desk
- 1 x Double USB socket at saloon settee
- 2 x Double USB outlet in each cabin
- 1 x Magnetic mobile phone charger in saloon
- House batteries
- 2 x Engine start batteries
- 1 x House battery isolator switch
- **Increased battery capacity and AGM batteries in lieu of standard**
- 2 x Engine starter battery isolator switches
- 2 x Alternators, standard with engines
- 1 x Electrical spares kit: fuses, relays, fuse holders
- 3000W 110V Inverter for convection microwave oven
- **Link engine starter batteries to house batteries**
- **Stereo system with interior and exterior speakers**
- **Full Raymarine electronic package**

Exhibit A

- **Forward-facing camera**
- **Generator**
- **Airconditioning**
- **Watermaker**
- **TV**
- **Solar panels**
- **Underwater lights**
- **Fans in the cabins**
- **Shore power pack**

ENGINE & CONTROLS

- Double lever throttle / gearshift control
- Sound deadening panels in engine room
- 2 x Engine room ventilation fans and ducting
- 2 x Yanmar 45hp diesel engines with sail drives
- 2 x Propellers - fixed blade
- 2 x Fuel deck fillers
- 2 x Fuel filter / water separators
- 2 x Fuel tanks 182USgal / 690Ltr total capacity
- 2 x Exhaust skin fittings (s/s)
- 2 x Exhaust water locks
- 2 x Cooling water inlet strainers
- 2 x Exhaust cooling water temperature sensors with audible alarms at helm
- **Engine room automated fire suppression system**

RUDDER & STEERING SYSTEM

- Balanced spade rudders
- Rudder stock in stainless steel
- Bearings with fibreglass rudder tube
- Chain and wire steering system with bulkhead steering unit and brake
- Destroyer-type steering wheel
- Emergency tiller

RUNNING RIGGING

- 2 x Superbraid Main sheets (3:1 purchase)
- 2 x Superbraid Genoa sheets
- 3 x Superbraid Halyards
- 2 x Superbraid Single line reefs lead aft
- Main boom topping lift

PLUMBING INSTALLATION

- Hot and cold pressurized fresh water system consisting of:
 - 2 x Water tanks, 185USgal / 700ltr total capacity
 - 2 x Fresh water pressure pump with accumulator tank
 - 2 x Water heaters with increased capacity**
- Hot and cold transom shower
- Automatic shower drain pumps
- Holding tanks
- 2 x Electric bilge pumps (keel sump) with float switches and alarm at switch panel
- 2 x Manual bilge pumps
- 2 x High water bilge float switches with alarm at switch panel
- 2 x Elec. bilge pumps (engine room) with float switch and alarm at switch panel
- Water purifying filter system (Purifying water tap located at galley)
- Freshwater connection

GENERAL EQUIPMENT

- **Mooring / dock lines / fenders**
- **Safety pack**
- **Charter pack**
- **Commissioning and delivery to charter base**

INITIALS _____

INITIALS _____

REV: 08-28-2024

CERTIFICATIONS

- CE Certification
- NMMA Certification

NOTE

The Builder reserves the right to change or amend the contents of this document at any time without prior notification to any third party, and no liability will be accepted for errors contained within the same.

PRELIMINARY