

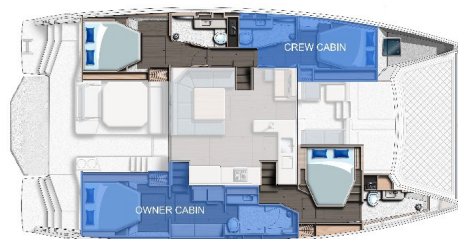


Moorings 5000 - 4-cabin Crewed

Specifications and Equipment List

Moorings Charter Upgrades in **BOLD**

Length Overall:	50ft 6in 15.40m
Waterline Length:	48ft 11in 14.90m
Beam:	26ft 5in 8.04m
Draft:	5ft 30in 1.60m
Displacement:	45415 lbs 20600 kg
Fuel Capacity:	243 USgal 920 L
Water Capacity:	185 USgal 700 L
Engines:	2 x Yanmar 80hp



DECK & HULL

- Guard wires with stanchions, bases, port & starboard side gates
- Guard wires across bow and stern
- 1600w vertical windlass with capstan, 10mm gypsy & hand-held remote
- **Windlass "up" footswitch**
- Anchor bow roller fitting
- Anchor chain stopper
- Life raft locker with convertible fore/aft seat bolster
- Sliding companionway door/window
- Sliding hatch over forward cockpit steps
- Hardtop over forward and aft cockpit complete with LED lighting
- Hardtop bimini over helm with supports and LED light
- Folding swimming ladder c/w teak steps
- Emergency ladder on port transom
- Aft cockpit table
- Fold down Forward Cockpit table
- Mainsheet track and traveller system
- Mainsheet system (3:1 purchase)
- Trampoline
- Helm seat with upholstered backrest
- Acrylic smoke grey tinted windows
- Hardtop supports
- Hatches:
 - 5 x Size 10 Flush Hatch over heads
 - 5 x Size 44 Flush Hatch over cabins
 - 1 x Size 60 Flush Hatch over port forepeak (includes mushroom cowl)
- Portlights:
 - 2 x Size 5 in windscreen
 - 8 x Size 1 in hull side
 - 2 x Custom in transom
- 1 x Anchor chain bin
- 1 x Anchor/windlass locker
- 3 x Foredeck/forward cockpit lockers
- Forward access to foredeck c/w watertight Lewmar door
- 2 x Pulpits with seats
- 2 x Pushpits
- 2 x Coachroof handrails
- 2 x Hardtop grab handles

INITIALS_____

INITIALS_____

REV: 07-24-2025 -- L50 #227 #230

Exhibit A

- 2 x Transom grab handles
- 9 x 260mm mooring cleats
- 2 x Winch handles
- 2 x Primary electric winchs
- **1 x Electric main sheet winch in lieu of standard**
- 2 x Genoa cars with pin stop
- 2 x Genoa tracks
- 1 x Halyard clutch at helm (mainsail)
- 1 x Halyard clutch at helm (gennaker)
- 2 x Genoa sheet clutch at helm
- 1 x Main sheet clutch at helm
- 2 x Traveller clutch at helm
- 2 x Main sheet clutch at helm
- 2 x Reef clutch at helm
- 1 x Clutch and cleat on mast for genoa halyard
- 1 x Furler clutch
- 3 x Drinks holders - 2 in fwd cockpit and 1 at helm
- Rope bag at helm with integral winch handle pocket
- **Composite teak decking**
- **Winch type lifting platform with folding chocks**
- **Forepeak berth**
- **Aft cockpit cushions (seats & backrests)**
- **Forward cockpit cushions (seats & backrests)**
- **Helmsman enclosure**
- **Helm Seat Cushion**
- **Stainless steel anchor and galvanised chain**
- **230ft (70m) anchor chain instead of 165ft (50m) chain**
- **Additional anchor with 26ft (8m) chain & 200ft (61m) warp**
- **Anchor bridle, shackles and hook**

MAST, RIGGING & SAILS

- **Custom heavy-duty battened charter mainsail**
- **Upgraded heavy-duty furling genoa with UV protection**
- **Stackpack system in Moorings blue with logo**
- Natural anodized mast
- Natural anodized crossbeam c/w mooring cleats
- Wind indicator
- Genoa furler
- Mainsail fully battened c/w 2 rows reefs
- Furling genoa
- 2 x Additional spare 12v wires in mast
- Additional spare conduit with messenger in mast

FLYBRIDGE LOUNGE

- L-shaped settee with cushions and backrest
- Sunbed mattress
- Table
- Triple beverage holder
- 2 x pop-up lights

SALOON / INTERIOR

- **Sunbrella "Pebble" upholstery pack**
- Laminate finish with solid wood trims
- Wear resistant laminate flooring
- **Saloon table convertible to coffee table in addition to standard double bunk conversion**
- U-shape settee
- LED overhead lighting
- Concealed overhead rope lighting

INITIALS_____

INITIALS_____

REV: 07-24-2025 -- L50 #227 #230

Exhibit A

- Overhead window with blind
- Ventilation through forward-facing port lights
- Stowage space under settee cushions
- Forward doorway access to forward cockpit and foredeck
- Access to aft cockpit through sliding door
- 2 x Loose Ottoman stools (upholstered)
- Joinery staircases to hull accommodation
- **Interior saloon blinds - front & side windows**

GALLEY

- High-quality galley worktop surfaces
- Single lever mixer faucet with pull-out sprayer
- Large bowl s/s sink
- Dish and cutlery drying recess with drainage
- Cover for drying recess
- 1 x Freezer drawer
- 1 x Fridge drawer
- **1 x Combo fridge/freezer drawer in galley**
- 4-burner gas hob
- Gas oven
- Gas solenoid shut-off valve with control & warning light at cooker
- Gas detectors in each hull connected to alarm in saloon
- Gas cylinder regulator in dedicated LPG locker
- Separate garbage bin locker
- Stowage space in shelf lockers
- Stowage space under floorboards
- Drawer under oven
- 3 x Drawers alongside oven
- Outboard galley shelf with provision for microwave
- **Microwave oven**

NAVIGATION CONSOLE

- Chart table with storage locker under hinged lid
- LED overhead lighting
- Backrest s/s railing
- **Motorised TV lift with TV**

STANDARD CABINS x 3

- Laminate finish with solid wood trims
- Wear resistant laminate flooring
- Double berths:
 - Forward Port Bunk (59in / 1.50m x 80in / 2.03m)
 - Forward Starboard Bunk (68in / 1.72m x 80in / 2.03m)
 - Aft Port Bunk (68in / 1.72m x 80in / 2.03m)
- Bedside tables (starboard forward and port aft cabin only)
- Bedside cave locker inboard (port forward & aft cabins only)
- Hanging locker
- Large open shelves
- Stowage drawer under each bunk
 - 1 in aft cabins
 - 2 in forward port cabin
 - 3 in forward starboard cabin
- Stowage space under floorboards
- LED overhead lighting
- Concealed overhead rope lighting
- Concealed under bunk rope lighting
- 2 x LED reading lamps in each cabin
- Overhead roller blinds for privacy

INITIALS_____

INITIALS_____

REV: 07-24-2025 -- L50 #227 #230

Exhibit A

- Large hull window incorporating portlight and pleated blind
- Transom portlight in aft cabin with pleated blind

OWNER CABIN

- Laminate finish with solid wood trims
- Wear resistant laminate flooring
- Double berth (68in / 1.72m x 80in / 2.03m)
- Bedside table outboard
- Bedside cave locker inboard
- 1 x Full height hanging locker
- 1 x Drawer unit with 2 x drawers
- Vanity table/desk with storage locker and mirror under lid
- Fold up vanity mirror
- Stowage drawer under bunk
- Stowage space under floorboards
- Sliding entrance door with lock
- Large mirror behind sliding entrance door
- Glass divider with sliding panel
- LED overhead lighting
- Concealed overhead rope lighting
- Concealed under bunk rope lighting
- 2 x LED reading lamps over bunk
- Large hull window incorporating portlight and pleated blind
- Transom portlight in aft cabin and pleated blind

HEAD COMPARTMENTS x 4

- Washbasins with basin mixer and high-quality worktop
- Under-basin locker with toilet roll holder
- Vanity locker with mirror
- Double towel rail
- Sliding or hinged heads door
- Coat hook on door
- Dedicated trashcan locker
- Shower compartment c/w lever mixer and adjustable shower rose
- Shower sump with automatic drainage system
- LED Overhead lighting
- Portlight with roller blind
- Overhead roller blinds for privacy
- **Electric fresh water flushing toilets**
- **Shaver outlets with GFI protection**

ELECTRICAL INSTALLATION

- **Global shore power pack**
- Digital monitoring
- LED Courtesy lights at stairways
- Bi-colour & stern navigation lights
- **Universal outlet sockets instead of standard regional sockets**
- 1 x Outlet socket at helm station
- 2 x USB outlets at chart table
- 2 x USB outlets at fridge locker
- 2 x USB outlets at saloon settee
- 2 x USB outlets in each cabin
- 2 x Engine starter batteries
- **AGM batteries instead of standard and increased battery capacity**
- **Inverter (3000 W) & Battery charger**
- 1 x House battery isolator switch
- 2 x Engine starter battery isolator switches
- 2 x Alternators, standard with engines

INITIALS_____

INITIALS_____

REV: 07-24-2025 -- L50 #227 #230

Exhibit A

- **Sterling alternator to battery charger. Includes button at helm to link engine batteries to house batteries**
- 1 x Electrical spares kit: fuses, relays, fuse holders
- **Stereo system with interior and exterior speakers**
- **Full Raymarine electronic package**
- **i70 Display at Helmstation**
- **Rear-view camera**
- **Forward facing camera**
- **Genset**
- **Airconditioning**
- **Watermaker**
- **Fans in the cabins**
- **1 x Combo fridge/freezer drawer in cockpit**
- **Electric grill in aft cockpit**
- **Solar panels**
- **Underwater lights**

ENGINE & CONTROLS

- Double lever throttle/gearshift control
- Sound-deadening panels in engine room
- 2 x Engine room ventilation fans
- **2 x Yanmar 80hp diesel engines with sail drives**
- 2 x Propellers – fixed blade
- 2 x Fuel deck fillers
- 2 x Fuel filter/water separators
- 2 x Fuel tanks 243USgal / 920 L total capacity
- 2 x Exhaust skin fittings (s/s)
- 2 x Exhaust water locks/mufflers
- 2 x Cooling water inlet strainers
- 2 x Exhaust cooling water temperature sensors with audible alarms at helm

RUDDER & STEERING SYSTEM

- High-performance spade rudders
- Self-aligning bearings
- Chain-and-wire steering system c/w bulkhead steering unit and brake
- Destroyer-type steering wheel
- Emergency tiller (s/s)

RUNNING RIGGING

- 1 x Main sheet
- 2 x Traveller control lines
- 2 x Genoa sheets
- 3 x Halyards (main, genoa & spare)
- 2 x Single line reefs lead aft
- Main boom topping lift

PLUMBING INSTALLATION

- Hot and cold pressurized fresh water system consisting of:
 - 2 x Water tanks, 185 USgal / 700 L total capacity with level reading and gauges
 - 1 x Fresh water pressure pump with accumulator tank
 - 2 x Hot water cylinders 22 USgal / 83 L total capacity
- 4 x Automatic shower drain pumps
- Holding tanks (44 USgal / 165 L total capacity)
- 2 x Electric bilge pumps (keel sump) with float switches and alarm at switch panel
- 2 x Manual bilge pumps with (keel sump)
- 2 x High water bilge float switches with alarm at switch panel
- 2 x Electric bilge pumps (engine room) with float switch and warning light at switch panel
- Water purifying filter system (Purifying water tap located at galley)
- **Transom shower (hot and cold)**

INITIALS_____

INITIALS_____

REV: 07-24-2025 -- L50 #227 #230

GENERAL EQUIPMENT

- Mooring / dock lines / fenders
- Safety pack
- Charter pack
- Commissioning and delivery to charter base

CREWED YACHT PACKAGE

- 1 x 2-person kayak
- Stand up paddleboard (SUP) and paddle
- Fishing tackle
- 12ft rigid bottom inflatable with 25 HP outboard
- Kneeboard, tube & life vest

NOTE

The Builder reserves the right to change or amend the contents of this document at any time without prior notification to any third party, and no liability will be accepted for errors contained within the same.